



**Government of India**  
**Ministry of Earth Sciences**  
**India Meteorological Department**



**Press Release**

**Date: 11<sup>th</sup> April, 2025**

**Time of Issue: 1345 hours IST**

**Subject:** i) Due to Western Disturbance; rainfall along with thunderstorm & lightning, gusty/squally winds and hailstorm likely to continue over Northwest India on 11<sup>th</sup> and no significant weather except Uttarakhand and Uttar Pradesh, where it is likely to continue on 12<sup>th</sup> April.  
ii) Rainfall along with thunderstorm & lightning and gusty/squally winds is likely to continue over East & Northeast India during next 3 days.  
iii) A fresh spell of heat wave likely to commence over parts of northwest India and over Gujarat from 15<sup>th</sup> April.

**i. Realised weather during past 24 hours till 0830 hours IST of today, the 11<sup>th</sup> April 2025 (Annexure I):**

- ❖ **Heat wave to severe heat wave conditions** prevailed over in isolated parts of Himachal Pradesh, Haryana, Rajasthan.
- ❖ **Warm night conditions** prevailed in isolated pockets of Haryana.
- ❖ **Hailstorm** occurred at isolated places over Assam & Meghalaya, Jammu-Kashmir-Ladakh-Gilgit-Baltistan-Muzaffarabad, Uttarakhand, Himachal Pradesh, Punjab, Haryana, West Uttar Pradesh, Madhya Pradesh, Nagaland, Manipur, Mizoram & Tripura, Marathawada, Jharkhand.
- ❖ **Heavy rainfall** recorded at isolated places over Sub-Himalayan West Bengal & Sikkim, Assam & Meghalaya, Uttarakhand,
- ❖ **Thunderstorm accompanied with Squally/Gusty winds** prevailed at isolated locations over Jammu-Kashmir-Ladakh-Gilgit-Baltistan-Muzaffarabad, Himachal Pradesh, Punjab, Haryana, Uttar Pradesh Odisha
- ❖ **Duststorm** recorded at isolated places over East Uttar Pradesh.

For more details of realised weather, kindly refer [Annexure I](#)

**Temperature:**

- ❖ Temperature observations during past 24 hours till 0830 hours IST of today are provided in [Annexure II](#).

**ii. Weather Systems, Forecast and Warnings (Annexure III & IV):**

- ❖ The **Western Disturbance** as a **trough** in westerlies in middle tropospheric levels runs roughly along Long. 70°E to the north of Lat. 26°N. An **upper air cyclonic circulation** lies over northwest Rajasthan, 2<sup>nd</sup> over northwest Madhya Pradesh and a trough runs from west Rajasthan to Coastal Andhra Pradesh in lower tropospheric levels.
- ❖ The **upper air cyclonic circulations** also lie over (1) northeast Assam & (2) Sub-Himalayan West Bengal and a trough runs from northeast Madhya Pradesh to Bangladesh across Jharkhand in lower tropospheric levels. Under the influence of these systems:
  - ✓ **Scattered to fairly widespread** light/moderate rainfall accompanied with **thunderstorm, lightning & gusty winds (speed 40-50 kmph)** likely over Jammu-Kashmir-Ladakh-Gilgit-Baltistan-Muzaffarabad and Himachal Pradesh on 11<sup>th</sup> and Uttarakhand on 11<sup>th</sup> & 12<sup>th</sup> April.
  - ✓ **Scattered to fairly widespread** light/moderate rainfall accompanied with **thunderstorm, lightning & gusty winds (speed 40-50 kmph)** likely over northeast and adjoining east India during next 7 days.

- ✓ Isolated to scattered rainfall accompanied with **thunderstorm, lightning & gusty winds (speed 40-50 kmph)** likely over plains of West, Central and adjoining East India during 11<sup>th</sup>-14<sup>th</sup> April.
- ✓ **Heavy rainfall** likely over Uttarakhand, Bihar, Kerala & Mahe on 11<sup>th</sup>; Sub-Himalayan West Bengal & Sikkim, Arunachal Pradesh on 11<sup>th</sup> & 12<sup>th</sup>; Assam & Meghalaya during 11<sup>th</sup>-15<sup>th</sup> April.
- ✓ **Isolated Hailstorm** likely over Jammu-Kashmir-Ladakh-Gilgit-Baltistan-Muzaffarabad, Himachal Pradesh, Punjab, Haryana Chandigarh, Chhattisgarh on 11<sup>th</sup>; Uttarakhand, East Madhya Pradesh on 11<sup>th</sup> & 12<sup>th</sup>; Uttar Pradesh on 12<sup>th</sup> April.
- ✓ **Duststorm** very likely at isolated places over Rajasthan on 11<sup>th</sup> & 12<sup>th</sup> April.
- ✓ **Thundersquall (wind speed reaching 50-60 kmph)** very likely at isolated places over Punjab, Haryana Chandigarh & Delhi, Rajasthan on 11<sup>th</sup> & 12<sup>th</sup> April.
- ✓ **Scattered to fairly widespread** light/moderate rainfall accompanied with **thunderstorm, lightning & gusty winds (speed 30-40 kmph)** likely over Kerala & Mahe during next 7 days and Lakshadweep during next 2 days. **Isolated to Scattered** light/moderate rainfall accompanied with **thunderstorm, lightning & gusty winds (speed 40-50 kmph)** likely over Tamilnadu, Puducherry & Karaikal, Telangana, Karnataka during next 4 days.
- ✓ **Thundersquall (wind speed reaching 50-60 kmph)** very likely at isolated places over Coastal Andhra Pradesh & Yanam and Odisha on 11<sup>th</sup> April.

#### Temperature Forecast:

- ❖ Fall in maximum temperatures by 2°C likely over Northwest India during next 3 days and gradual rise by 3-5°C thereafter during subsequent 4 days.
- ❖ Fall in maximum temperatures by 2°C likely over Central India during next 3 days and gradual rise by 2-4°C thereafter during subsequent 4 days.
- ❖ Fall in maximum temperatures by 2-3°C likely over west India during next 3 days and gradual rise by 2-3°C thereafter during subsequent 4 days.
- ❖ No significant change over rest parts of the country.

#### Heat wave, warm night and Hot & Humid weather warning:

- ❖ **Heat wave conditions** very likely at isolated/some places over West Rajasthan on 14<sup>th</sup> & 15<sup>th</sup> with severe heat wave conditions at isolated pockets on 16<sup>th</sup> & 17<sup>th</sup> April
- ❖ **Heat wave conditions** are very likely at isolated places over Gujarat state during 15<sup>th</sup>-17<sup>th</sup>; Punjab, Haryana and East Rajasthan on 16<sup>th</sup> & 17<sup>th</sup> April.
- ❖ **Hot & humid** weather is likely to prevail over Tamilnadu Puducherry & Karaikal on 11<sup>th</sup> & 12<sup>th</sup> April.

#### iv. Weather conditions and forecast over Delhi/NCR during 11<sup>th</sup> April to 14<sup>th</sup> April, 2025 (Annexure V)

For more details, kindly refer National Weather Bulletin:

[https://mausam.imd.gov.in/responsive/all\\_india\\_forecast\\_bulletin.php](https://mausam.imd.gov.in/responsive/all_india_forecast_bulletin.php)

For District wise warnings refer: <https://mausam.imd.gov.in/responsive/districtWiseWarningGIS.php>

**Significant weather reported during past 24 hours till 0830 hours IST of today:**

- ❖ **Light/moderate Rainfall with thunderstorm & lightning observed** at most places over Andaman & Nicobar Islands, West Bengal & Sikkim, Jharkhand, Bihar ; a many places over Arunachal Pradesh, Assam & Meghalaya , Odisha, Jammu-Kashmir-Ladakh-Gilgit-Baltistan-Muzaffarabad, Uttarakhand, East Uttar Pradesh; at a few places over Nagaland, Manipur, Mizoram & Tripura, Himachal Pradesh, Lakshadweep, cap, Rayalaseema, Telangana, Karnataka; at isolated places over Punjab, Haryana Chandigarh & Delhi, West Uttar Pradesh, East Rajasthan, Madhya Pradesh, Vidarbha, Chhattisgarh, Konkan & Goa, Marathawada, Tamilnadu Puducherry & Karaikal, Kerala & Mahe.

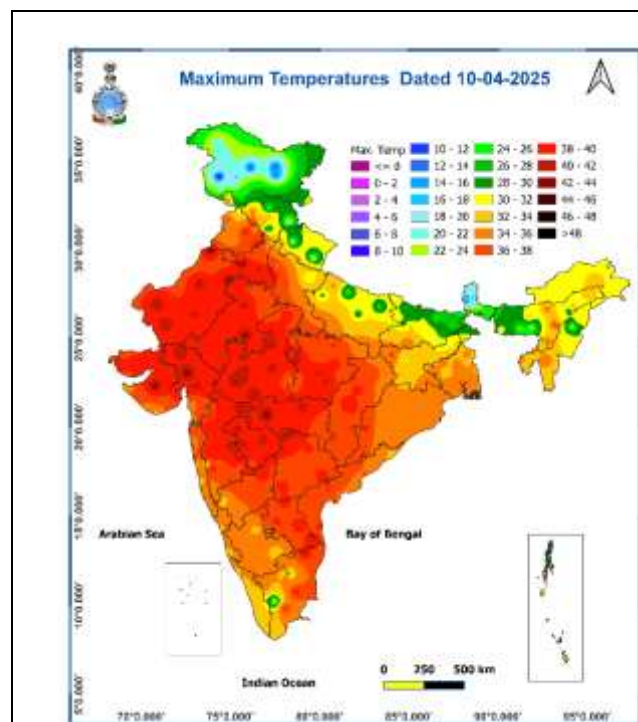
**Rainfall recorded (in cm):**

- ❖ **Sub-Himalayan West Bengal & Sikkim:** Alipurduar (pto) (dist Alipurduar) 10, Amfu Pundibari (dist Cooch Behar) 6,
- ❖ **Tamilnadu:** Zone 01 Kathivakkam (dist Chennai) 6, Ennore AWS (dist Tiruvallur) 4,
- ❖ **Odisha:** Karanjia ( Mayurbhanj) 7, Jeypore ( Koraput) 5, Nayagarh ( Nayagarh) 5, Sharpada ( Keonjhar) 5, Kantapada ( Cuttack) 4, Kankadahad ( Dhenkanal) 4, Banarpal ( Angul) 4, Ranpur ( Nayagarh) 4, Dhenkanal Pto ( Dhenkanal) 4, Telkoi ( Keonjhar) 4,
- ❖ **Meghalaya:** Williamnagar (dist East Garo Hills) 8, Gossaigaon\_ Aws (dist Kokrajhar) 5, Bihubar (dist Sibsagar) 5,
- ❖ **Bihar:** Bhawanipur (dist Purnea) 7, Rajauli (dist Nawada) 7, Hilsa (dist Nalanda) 7, Korha (dist Katihar) 6, Akbarpur (dist Nawada) 6, Matiyani (dist Begusarai) 6, Asthawan (dist Nalanda) 6, Sarmera (dist Nalanda) 5, Bihar Shrif (dist Nalanda) 5, Puraini (dist Madhepura) 5, Baltara (dist Khagaria) 5, Rahui (dist Nalanda) 5, Silao (dist Nalanda) 5, Barari (dist Katihar) 5, Salakhua (dist Saharsa) 5, Ben (dist Nalanda) 5, Noorsarai (dist Nalanda) 5, Raghunathpur (dist Siwan) 5, Pakrivarma (dist Nawada) 5, Amarpur (dist Banka) 5, Itarahi (dist Buxar) 5, Purnea (dist Purnea) 5,

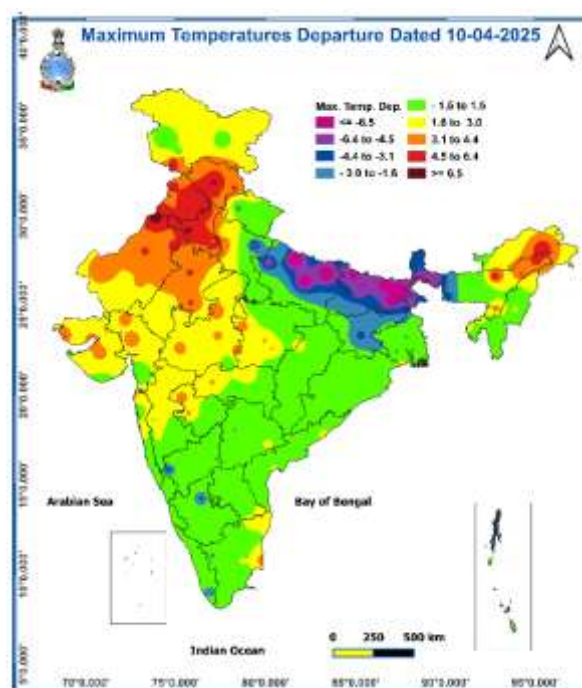
### Temperature observations during past 24 hours till 0830 hours IST of today:

- ❖ Yesterday, the Maximum Temperatures have fallen by 4-8°C over Uttar Pradesh, Sub-Himalayan West Bengal & Sikkim; by 2-4°C over Uttarakhand, Gujarat Region, Jharkhand, Assam & Meghalaya, North Interior Karnataka; 1-2°C over Jammu-Kashmir-Ladakh, Himachal Pradesh, Rajasthan, Madhya Maharashtra, Madhya Pradesh, Gangetic West Bengal, Bihar, South Interior Karnataka, Kerala & Mahe and no significant change over rest parts of the country.
- ❖ Yesterday, **Maximum Temperatures** were in the range of **42-46°C** at a few places over Rajasthan, Vidarbha; at isolated places over Gujarat state, West Madhya Pradesh; **38-42°C** at most places over East Madhya Pradesh; at many places over Punjab, Haryana-Chandigarh-Delhi, Odisha, Chhattisgarh; at a few places over Madhya Maharashtra, Rayalaseema, Tamil Nadu, Puducherry & Karaikal, Telangana; at isolated places over Coastal Andhra Pradesh & Yanam, North Interior Karnataka; **35-38°C** at many places over Gangetic West Bengal; at isolated places over Jharkhand, Konkan & Goa, Kerala & Mahe; **30-35°C** at many places over Coastal & South Interior Karnataka; at a few places over Himachal Pradesh, West Uttar Pradesh, Uttarakhand; at isolated places over Jammu-Kashmir-Ladakh-Gilgit-Baltistan Muzaffarabad, Arunachal Pradesh, Assam, Nagaland, Manipur, Mizoram & Tripura; **25-30°C** at many places over East Uttar Pradesh, Bihar, Meghalaya. Yesterday, the **highest maximum temperature of 46.5°C** was reported at **Nandurbar (Madhya Maharashtra)** over the country. **(Fig.1)**
- ❖ Yesterday, Maximum Temperatures were **markedly above normal (5.1°C or more)** at isolated places over Madhya West Rajasthan, Vidarbha, Marathwada, Arunachal Pradesh, Tamil Nadu, Puducherry & Karaikal and Gujarat state; **appreciably above normal (3.1°C to 5.0°C)** at few places over Punjab, Himachal Pradesh; at isolated places over Jammu-Kashmir-Ladakh-Gilgit-Baltistan-Muzaffarabad, Haryana Chandigarh-Delhi, East Rajasthan, Assam & Meghalaya; **above normal (1.6°C to 3.0°C)** at isolated places over Coastal Andhra Pradesh & Yanam, Nagaland, Manipur, Mizoram & Tripura, Gangetic West Bengal and Konkan & Goa. These were **appreciably below normal (-3.1°C to -5.0°C)** at few places over Bihar; at isolated places over Uttar Pradesh, Sub-Himalayan West Bengal & Sikkim; **below normal (-3.0°C to -1.6°C)** at many places over Andaman & Nicobar Islands; at isolated places over Odisha, Jharkhand, Kerala & Mahe and normal over rest parts of the country. **(Fig. 2)**

**Fig. 1: Maximum Temperatures**



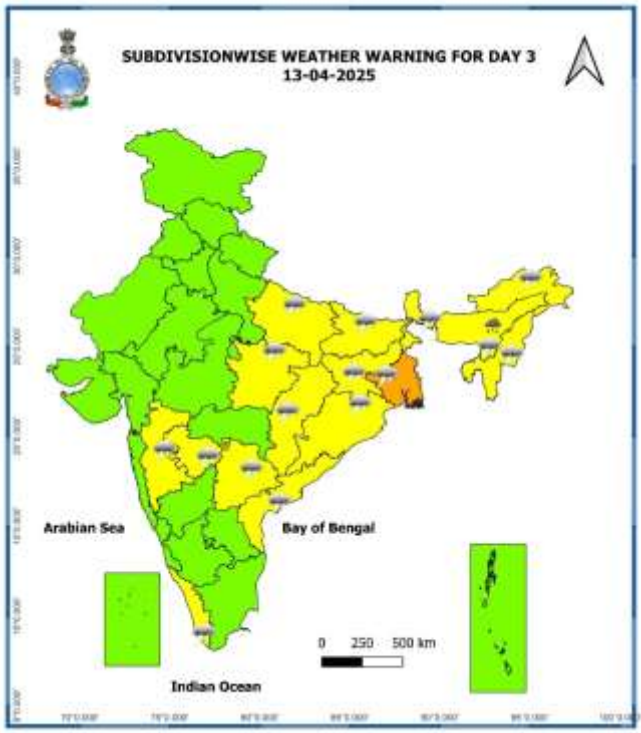
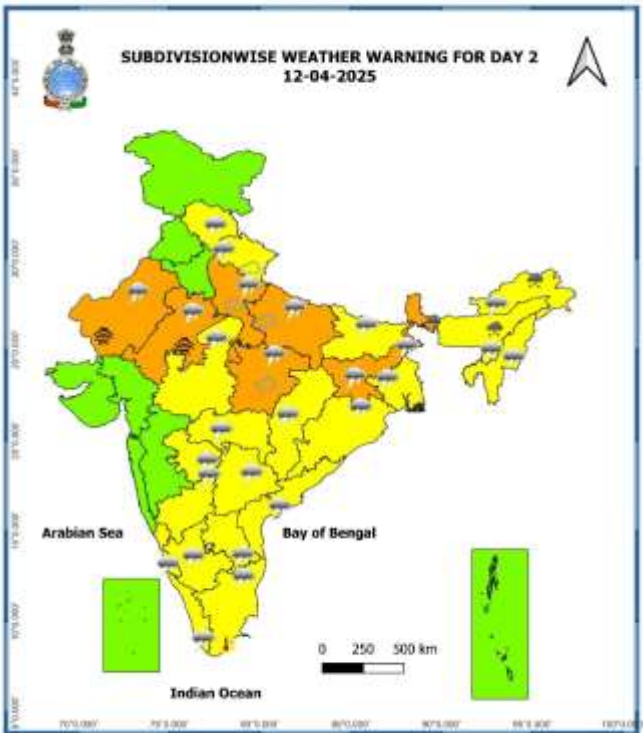
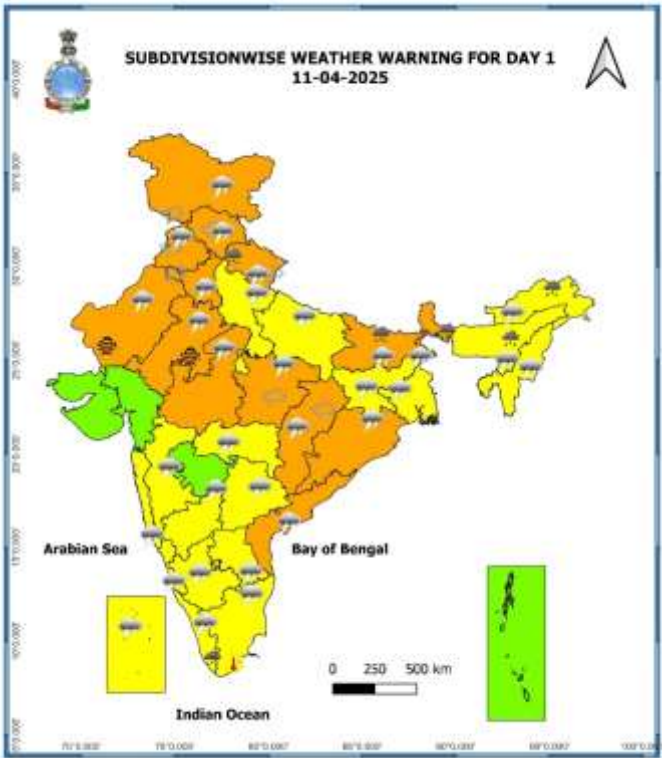
**Fig. 2: Departure of Maximum Temperatures**

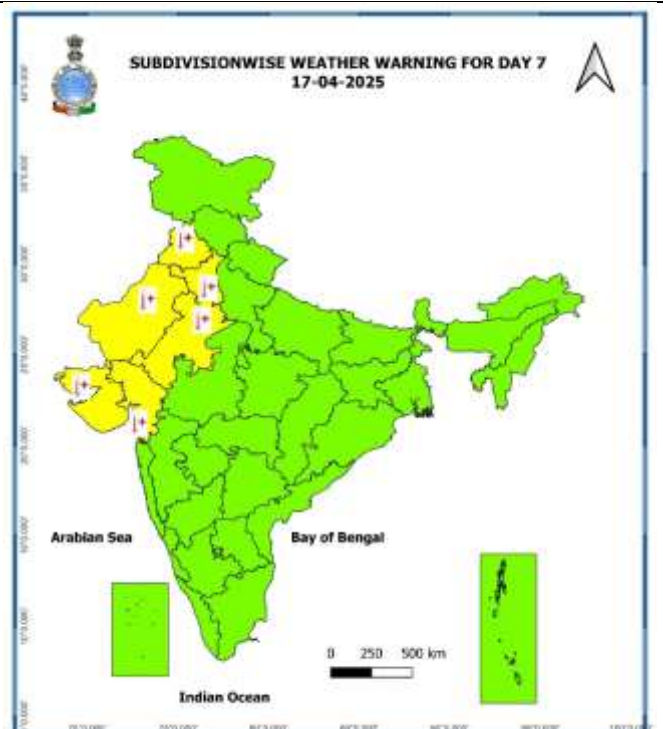
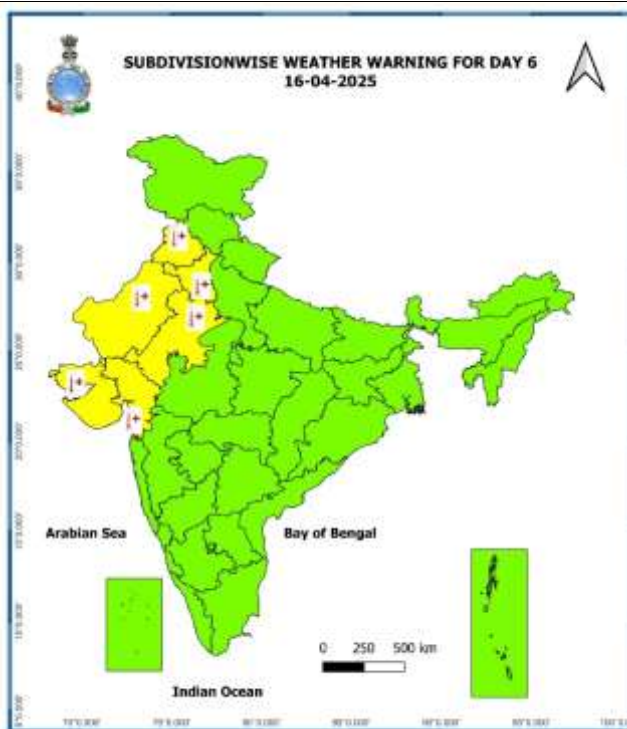
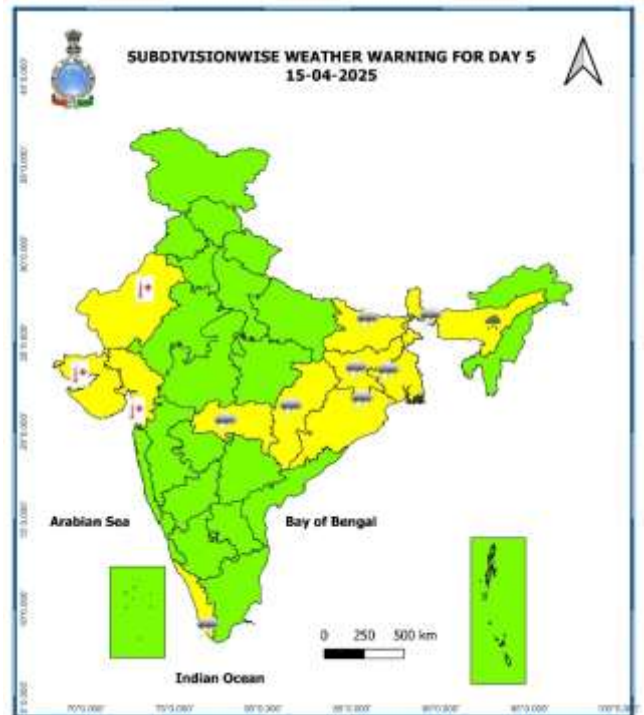
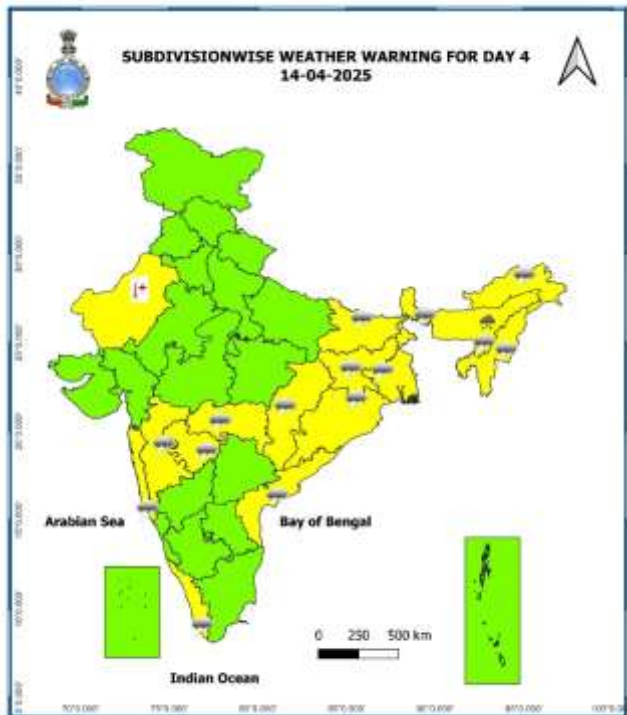


7 Days Rainfall Forecast								
S. No.	Subdivision	11-Apr	12-Apr	13-Apr	14-Apr	15-Apr	16-Apr	17-Apr
		Day 1	Day 2	Day 3	Day 4	Day 5	Day 6	Day 7
1	ANDAMAN & NICOBAR ISLANDS	WS	FWS	SCT	SCT	SCT	SCT	SCT
2	ARUNACHAL PRADESH	FWS	FWS	SCT	SCT	SCT	SCT	SCT
3	ASSAM & MEGHALAYA	WS	WS	WS	FWS	FWS	FWS	FWS
4	NAGALAND, MANIPUR, MIZORAM & TRIPURA	SCT	SCT	SCT	SCT	SCT	SCT	SCT
5	SUB-HIMALAYAN WEST BENGAL & SIKKIM	FWS	FWS	FWS	SCT	SCT	FWS	SCT
6	GANGETIC WEST BENGAL	SCT	SCT	FWS	FWS	SCT	SCT	SCT
7	ODISHA	ISOL	ISOL	ISOL	SCT	FWS	FWS	SCT
8	JHARKHAND	SCT	SCT	FWS	FWS	SCT	SCT	SCT
9	BIHAR	SCT	SCT	SCT	SCT	SCT	ISOL	ISOL
10	EAST UTTAR PRADESH	ISOL	SCT	ISOL	ISOL	SCT	ISOL	SCT
11	WEST UTTAR PRADESH	SCT	SCT	ISOL	DRY	DRY	DRY	ISOL
12	UTTARAKHAND	WS	FWS	ISOL	DRY	DRY	ISOL	ISOL
13	HARYANA CHANDIGARH & DELHI	SCT	ISOL	DRY	DRY	DRY	DRY	DRY
14	PUNJAB	SCT	ISOL	DRY	DRY	DRY	DRY	DRY
15	HIMACHAL PRADESH	FWS	SCT	DRY	DRY	DRY	DRY	ISOL
16	JAMMU & KASHMIR AND LADAKH	FWS	ISOL	DRY	DRY	DRY	DRY	ISOL
17	WEST RAJASTHAN	ISOL	ISOL	DRY	DRY	DRY	DRY	DRY
18	EAST RAJASTHAN	ISOL	ISOL	DRY	DRY	DRY	DRY	DRY
19	WEST MADHYA PRADESH	ISOL	ISOL	DRY	DRY	DRY	DRY	DRY
20	EAST MADHYA PRADESH	ISOL	ISOL	ISOL	ISOL	ISOL	DRY	DRY
21	GUJARAT REGION	DRY	DRY	DRY	DRY	DRY	DRY	DRY
22	SAURASHTRA & KUTCH	DRY	DRY	DRY	DRY	DRY	DRY	DRY
23	KONKAN & GOA	ISOL	DRY	ISOL	ISOL	ISOL	DRY	DRY
24	MADHYA MAHARASHTRA	ISOL	ISOL	ISOL	ISOL	ISOL	DRY	DRY
25	MARATHAWADA	ISOL	ISOL	ISOL	ISOL	ISOL	ISOL	DRY
26	VIDARBHA	ISOL	ISOL	ISOL	ISOL	ISOL	ISOL	ISOL
27	CHHATTISGARH	ISOL	ISOL	ISOL	ISOL	SCT	SCT	SCT
28	COASTAL ANDHRA PRADESH & YANAM	SCT	SCT	SCT	SCT	SCT	SCT	SCT
29	TELANGANA	ISOL	ISOL	ISOL	ISOL	ISOL	ISOL	ISOL
30	RAYALASEEMA	SCT	SCT	ISOL	ISOL	ISOL	ISOL	ISOL
31	TAMILNADU PUDUCHERRY & KARAIKAL	ISOL	ISOL	ISOL	ISOL	ISOL	ISOL	ISOL
32	COASTAL KARNATAKA	SCT	ISOL	ISOL	SCT	SCT	SCT	SCT
33	NORTH INTERIOR KARNATAKA	ISOL	ISOL	ISOL	ISOL	ISOL	ISOL	ISOL
34	SOUTH INTERIOR KARNATAKA	SCT	ISOL	ISOL	SCT	SCT	SCT	SCT
35	KERALA & MAHE	FWS	SCT	SCT	SCT	SCT	SCT	SCT
36	LAKSHADWEEP	SCT	SCT	DRY	DRY	DRY	DRY	DRY

- As the lead period increases forecast accuracy decreases.







- Action may be taken based on ORANGE AND RED COLOUR warnings.
- Vulnerable regions likely urban and hilly areas action may be initiated for heavy rainfall warning.
- As the lead period increases forecast accuracy decreases.

Detailed district wise Multi Hazard weather warning for next five days available at  
<https://mausam.imd.gov.in/responsive/districtWiseWarningGIS.php>

**Weather forecast over Delhi/NCR during 11<sup>th</sup> to 14<sup>th</sup> Apr. 2025****Past Weather:**

There has been fall in minimum temperature upto 03°C and fall in maximum temperature upto 01°C over Delhi/NCR during the past 24 hours. The maximum and minimum temperatures over Delhi are in the range of 39 to 41 °C and 21 to 23 °C respectively. The minimum temperature was near normal and maximum temperature was above normal upto 05°C at most places. Generally cloudy sky conditions with predominant surface wind from the southwest/southeast direction with wind speeds less than 20 to 24 kmph with gusting to 50 kmph prevailed during the past 24 hours. Mainly clear sky conditions with wind speed less than 18 kmph from the southeast direction prevailed over the region in the forenoon today.

**Weather Forecast:**

**11.04.2025:** Generally cloudy sky. Very light rain/drizzle. Thunderstorm/lighting accompanied with strong surface winds (speed 20 – 30 kmph) with gusting to 50 kmph. The maximum temperature over Delhi is likely to be in the range of 36 to 38°C. The predominant surface wind will likely be from the southeast direction with a wind speed of less than 16 kmph till evening. It would increase becoming less than 20 kmph from the northeast direction during the night.

**12.04.2025:** Partly cloudy sky. Very light rain/drizzle. Thunderstorm/lighting accompanied with strong surface winds (speed 20 – 30 kmph) with gusting to 50 kmph. The maximum and minimum temperatures over Delhi are likely to be in the range of 35 to 37°C and 19 to 21°C respectively. The predominant surface wind will likely be from the southeast direction with a wind speed of 10-12 kmph during morning hours. The wind speed will gradually decrease thereafter becoming 08-10 kmph from the southeast direction during the afternoon. It will increase becoming less than 18 kmph from the northeast direction during evening and night.

**13.04.2025:** Mainly clear sky. The maximum and minimum temperatures over Delhi are likely to be in the range of 37 to 39°C and 19 to 21°C respectively. The predominant surface wind will likely be from the southeast direction with a wind speed of 08-10 kmph during morning hours. The wind speed will gradually increase becoming 12-14 kmph from the northeast direction in the afternoon. It will decrease becoming less than 10 kmph from the east direction during evening and night.

**14.04.2025:** Mainly clear sky. The maximum and minimum temperatures over Delhi are likely to be in the range of 38 to 40°C and 21 to 23°C respectively. The predominant surface wind will likely be from the southeast direction with a wind speed of 06-08 kmph during morning hours. The wind speed will gradually increase becoming 08-12 kmph from the northeast direction in the afternoon. It will increase becoming less than 14 kmph from the southeast direction during evening and night.



**Impact expected and action suggested due to isolated thunderstorm with lightning/gusty winds & Hailstorm over Jammu-Kashmir-Ladakh-Gilgit-Baltistan-Muzaffarabad, Himachal Pradesh, Punjab, Haryana, Chhattisgarh, Bihar, Coastal Andhra Pradesh & Yanam, West Madhya Pradesh on 11th and Sub-Himalayan West Bengal & Sikkim, Uttarakhand, East Madhya Pradesh, Rajasthan on 11th & 12th; Jharkhand, Uttar Pradesh on 12th; Gangetic West Bengal on 13th April.**

**Impact expected:**

- Strong wind/hail may damage plantation, horticulture and standing crops.
- Hail may injure people and cattle at open places.
- Partial damage to vulnerable structures due to strong winds.
- Minor damage to kutcha houses/walls and huts.
- Loose objects may fly.

**Action suggested:**

- Stay indoors, close windows & doors and avoid travel if possible.
- Take safe shelters; do not take shelter under trees.
- Do not lie on concrete floors and do not lean against concrete walls.
- Unplug electrical/ electronic appliances.
- Immediately get out of water bodies.
- Keep away from all the objects that conduct electricity.

**Agromet advisories for likely impact of Hailstorm / Heavy Rainfall / Gusty Winds / Heatwave**

- In **Himachal Pradesh, Uttarakhand, East Madhya Pradesh and Chhattisgarh**, immediately shift the harvested produce in safer places or cover the produce with tarpaulin sheets in the fields to avoid the adverse impact of likely hailstorm. Use hail net and hail caps to prevent mechanical damage in orchards due to hailstorms.
- In **Arunachal Pradesh, Assam & Meghalaya, Sub-Himalayan West Bengal & Sikkim, Bihar and Uttarakhand** immediately harvest the matured crops, fruits and vegetables and shift the harvested produce in safer places or cover the produce with tarpaulin sheets in the fields. Also drain out excess water from standing crop and vegetable fields.
- Provide mechanical support to horticultural crops and staking to vegetables to avoid lodging.

**Livestock / Poultry / Fishery**

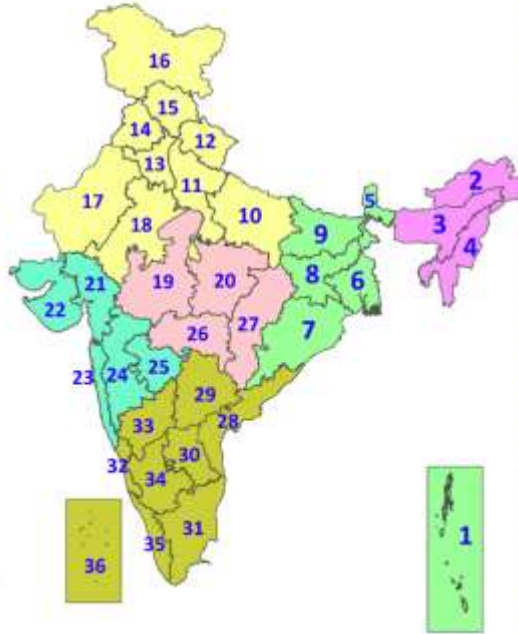
- Keep the animals inside the shed during heavy rainfall / hailstorm and provide them balanced feed.
- Store feed and fodder in a safe place to prevent spoilage.
- Construct an outlet with proper netting around the ponds to drain out excess water, thereby preventing fish from escaping in case of overflow.

## Legends & abbreviations:

- ❖ **Heavy Rain:**64.5-115.5mm; **Very Heavy Rain:**115.6-204.4mm; **Extremely Heavy Rain:** >204.4mm.
- ❖ **Obsy:** Observatory; **AWS:** Automatic Weather Station; **ARG:** Automatic Rain Gauge; **dist:** District: **NH:** National Highway; **KVK:** Krishi Vigyan Kendra; **DVC:** Damodar Valley Corporation; **PTO:** Part Time Office, **Aero:** Aerodrome, **IAF:** Indian Air Force.
- ❖ **Region wise classification of meteorological Sub-Divisions:**
  - **Northwest India:** Western Himalayan Region (Jammu-Kashmir-Ladakh-Gilgit-Baltistan-Muzaffarabad, Himachal Pradesh and Uttarakhand); Punjab, Haryana-Chandigarh-Delhi; West Uttar Pradesh, East Uttar Pradesh, West Rajasthan and East Rajasthan.
  - **Central India:** West Madhya Pradesh, East Madhya Pradesh, Vidarbha and Chhattisgarh.
  - **East India:** Bihar, Jharkhand, Sub-Himalayan West Bengal & Sikkim; Gangetic West Bengal, Odisha and Andaman & Nicobar Islands.
  - **Northeast India:** Arunachal Pradesh, Assam & Meghalaya and Nagaland, Manipur, Mizoram & Tripura.
  - **West India:** Gujarat Region, Saurashtra & Kutch, Konkan & Goa, Madhya Maharashtra and Marathawada.
  - **South India:** Coastal Andhra Pradesh & Yanam, Telangana, Rayalaseema, Coastal Karnataka, North Interior Karnataka, South Interior Karnataka, Kerala & Mahe, Tamil Nadu, Puducherry & Karaikal and Lakshadweep.

## LEGENDS

1. अंडमान और निकोबार द्वीपसमूह
2. अरुणाचल प्रदेश
3. असम और मेघालय
4. नागालैंड, मणिपुर, मिजोरम और त्रिपुरा
5. उप-हिमालयी पश्चिम बंगाल और सिक्किम
6. गंगीय पश्चिम बंगाल
7. ओडिशा
8. झारखंड
9. बिहार
10. पूर्वी उत्तर प्रदेश
11. पश्चिम उत्तर प्रदेश
12. उत्तराखंड
13. हरियाणा, चंडीगढ़ और दिल्ली
14. पंजाब
15. हिमाचल प्रदेश
16. जम्मू और कश्मीर और लद्दाख
17. पश्चिम राजस्थान
18. पूर्वी राजस्थान
19. पश्चिम मध्य प्रदेश
20. पूर्वी मध्य प्रदेश
21. गुजरात
22. सौराष्ट्र
23. कोंकण और गोवा
24. मध्य महाराष्ट्र
25. मराठवाड़ा
26. विदर्भ
27. छत्तीसगढ़
28. तटीय आंध्र प्रदेश और यनम
29. तेलंगाना
30. रायलसीमा
31. तमिलनाडु, पुडुचेरी और कराईकल
32. तटीय कर्नाटक
33. आंतरिक उत्तरी कर्नाटक
34. आंतरिक दक्षिणी कर्नाटक
35. केरल और माहे
36. लक्षद्वीप



1. Andaman & Nicobar Islands
2. Arunachal Pradesh
3. Assam & Meghalaya
4. Nagaland, Manipur, Mizoram & Tripura
5. Sub-Himalayan West Bengal & Sikkim
6. Gangetic West Bengal
7. Odisha
8. Jharkhand
9. Bihar
10. East Uttar Pradesh
11. West Uttar Pradesh
12. Uttarakhand
13. Haryana, Chandigarh & Delhi
14. Punjab
15. Himachal Pradesh
16. Jammu & Kashmir and Ladakh
17. West Rajasthan
18. East Rajasthan
19. West Madhya Pradesh
20. East Madhya Pradesh
21. Gujarat
22. Saurashtra
23. Konkan & Goa
24. Madhya Maharashtra
25. Marathwada
26. Vidarbha
27. Chhattisgarh
28. Coastal Andhra Pradesh & Yanam
29. Telangana
30. Rayalaseema
31. Tamilnadu, Puducherry & Karaikal
32. Coastal Karnataka
33. North Interior Karnataka
34. South Interior Karnataka
35. Kerala & Mahe
36. Lakshadweep

## SPATIAL DISTRIBUTION (% of Stations reporting)

% Stations	Category	% Stations	Category
76-100	Widespread (WS/Most Places)	26-50	Scattered (SCT/A Few Places)
51-75	Fairly Widespread (FWS/Many Places)	1-25	Isolated (ISOL)



Fog



Heavy Snow



Cold Wave

### COLOUR CODED WARNING

No Warning (No Action)

Watch (Be Aware)

Alert (Be Prepared To Take Action)

Warning (Take Action)



Heavy Rain



Dust Storm



Cold Day



Very Heavy Rain



Heat Wave



Ground Frost



Extremely Heavy Rain



Warm Night



Hot Day



Thunder & Lightning



Hot & Humid



Hailstorm



Strong Surface Winds



Dust Raising Winds

### Probabilistic Forecast

Terms	Probability of Occurrence (%)
Unlikely	< 25
Likely	25 - 50
Very Likely	50 - 75
Most Likely	> 75



## DEFINITION/CRITERIA

<b>Rain/ Snow *</b>	<b>Heavy:</b> 64.5 to 115.5 mm/cm * <b>Very Heavy:</b> 115.6 to 204.4 mm/cm * <b>Extremely Heavy:</b> > 204.4 mm/cm *
<b>Heat Wave</b>	<b>When maximum temperature of a station reaches <math>\geq 40^{\circ}\text{C}</math> for plains and <math>\geq 30^{\circ}\text{C}</math> for hilly regions</b> <b>(a) Based on Departure from normal</b> <b>Heat Wave:</b> Maximum Temperature Departure from normal $4.5^{\circ}\text{C}$ to $6.4^{\circ}\text{C}$ . <b>Severe Heat Wave:</b> Maximum Temperature Departure from normal $\geq 6.5^{\circ}\text{C}$ <b>(b). Based on Actual maximum temperature</b> <b>Heat Wave:</b> When actual maximum temperature $\geq 45^{\circ}\text{C}$ . <b>Severe Heat Wave:</b> When actual maximum temperature $\geq 47^{\circ}\text{C}$ <b>(c). Criteria for heat wave for coastal stations</b> When maximum temperature departure is $> 4.5^{\circ}\text{C}$ from normal. Heat Wave may be described provided maximum temperature $\geq 37^{\circ}\text{C}$
<b>Warm Night</b>	<b>When maximum temperature remains <math>40^{\circ}\text{C}</math></b> <b>Warm Night:</b> When minimum temperature departure $4.5^{\circ}\text{C}$ to $6.4^{\circ}\text{C}$ . <b>Severe Warm Night:</b> When minimum temperature departure $> 6.4^{\circ}\text{C}$ .
<b>Cold Wave</b>	<b>When minimum temperature of a station <math>\leq 10^{\circ}\text{C}</math> for plains and <math>\leq 0^{\circ}\text{C}</math> for hilly regions.</b> <b>(a). Based on departure</b> <b>Cold Wave:</b> Minimum Temperature Departure from normal $-4.5^{\circ}\text{C}$ to $-6.4^{\circ}\text{C}$ . <b>Severe Cold Wave:</b> Minimum Temperature Departure from normal $\leq -6.5^{\circ}\text{C}$ <b>(b) Based on actual Minimum Temperature (for Plains only)</b> <b>Cold Wave :</b> When Minimum Temperature is $\leq 4.0^{\circ}\text{C}$ <b>Severe Cold Wave:</b> When Minimum Temperature is $\leq 2.0^{\circ}\text{C}$ <b>(c) For Coastal Stations</b> When Minimum Temperature departure is $\leq -4.5^{\circ}\text{C}$ & actual Minimum Temperature is $\leq 15^{\circ}\text{C}$
<b>Cold Day</b>	<b>When minimum temperature of a station <math>\leq 10^{\circ}\text{C}</math> for plains and <math>\leq 0^{\circ}\text{C}</math> for hilly regions</b> <b>Based on departure</b> <b>Cold Day:</b> Maximum Temperature Departure from normal $-4.5^{\circ}\text{C}$ to $-6.4^{\circ}\text{C}$ . <b>Severe Cold Day:</b> Maximum Temperature Departure from normal $\leq -6.5^{\circ}\text{C}$
<b>Fog</b>	<b>Phenomenon of small droplets suspended in air and the horizontal visibility <math>&lt; 1\text{km}</math></b> <b>Moderate Fog:</b> When the visibility between 500-200 metres <b>Dense Fog:</b> when the visibility between 50- 200 metres <b>Very Dense Fog:</b> when the visibility $< 50$ metres
<b>Thunderstorm</b>	Sudden electrical discharges manifested by a flash of light (Lightning) and a sharp rumbling sound (thunder)
<b>Dust/Sand Storm</b>	An ensemble of particles of dust or sand energetically lifted to great heights by a strong and turbulent wind.
<b>Frost</b>	<b>Ice deposits on ground</b> Air temperature $\leq 4^{\circ}\text{C}$ ( over Plains)
<b>Squall</b>	<b>A strong wind that rises suddenly, lasts for atleast 1 minute.</b> <b>Moderate:</b> Wind speed 52-61 kmph <b>Severe:</b> Wind speed 62-87 kmph <b>Very Severe:</b> Wind speed $> 87$ kmph
<b>Sea State</b>	<b>Effect of various waves in the sea over specific area</b> <b>Rough to very rough:</b> Wind speed 41-62 kmph (22-33 knots) & Wave height 2.5-6 metre <b>High to very high:</b> Wind speed 63-117 kmph ( 34-63 knots) & Wave height 6-14 metre <b>Phenomenal:</b> Wind speed $> 117$ kmph ( $> 63$ knots) & Wave height $> 14$ metre
<b>Cyclone</b>	<b>Cyclonic Storm:</b> Wind speed 62-87 kmph (34-47 knots) <b>Severe Cyclonic Storm:</b> Wind speed 88-117 kmph (48-63 knots) <b>Very Severe Cyclonic Storm:</b> Wind speed 118-165 kmph (64 - 89 knots) <b>Extremely Severe Cyclonic Storm:</b> Wind speed 166-220 kmph (90 - 119 knots) <b>Super Cyclone Storm:</b> Wind speed $> 220$ kmph ( $> 119$ knots)

\* Red colour warning does not mean "Red Alert", Red colour warning means "Take Action".  
 Forecast and Warning for any day is valid from 0830 hours IST of day till 0830 hours IST of next day.  
 For more details, kindly visit <https://mausam.imd.gov.in> or contact: 011-2434-4599  
 (Service to the Nation since 1875)

**Hot and Humid:** When maximum temperatures remain  $3^{\circ}\text{C}$  above normal along with the above normal relative humidity.